

Zoning Bylaw Review

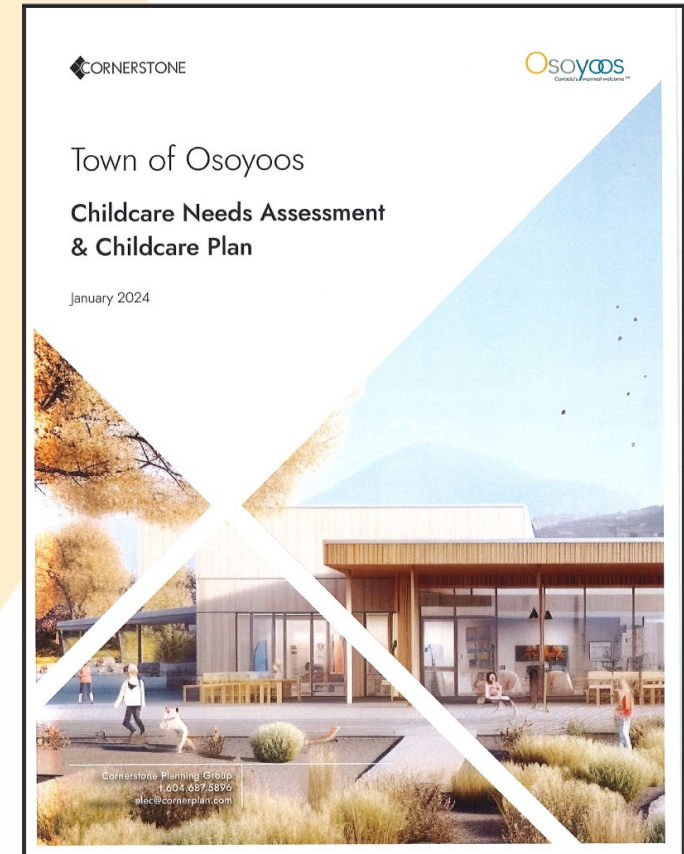
Child Care Facilities

Committee of the Whole - Tuesday February 27, 2024

Child Care Facilities

Childcare Needs Assessment & Child Care Plan

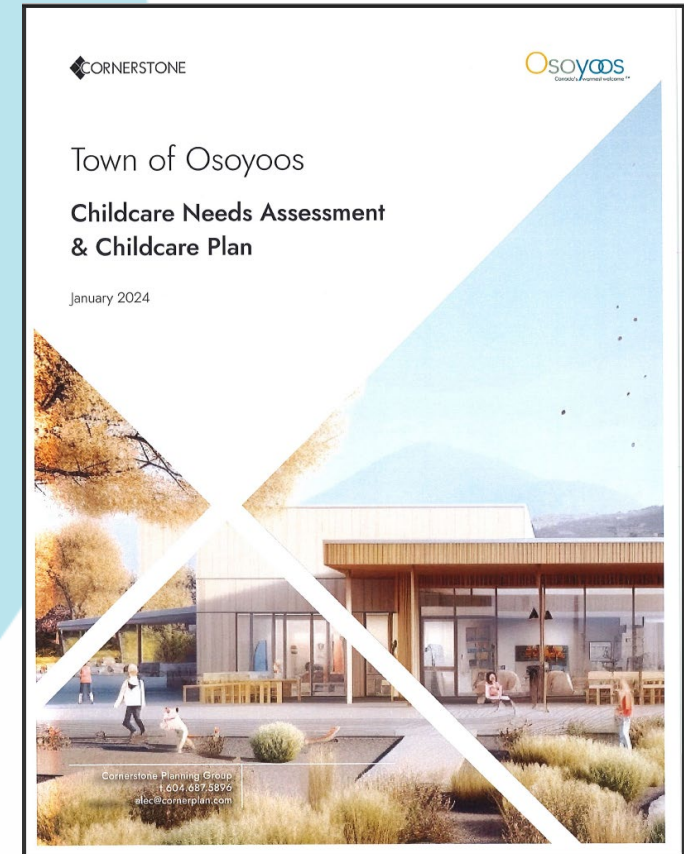
- Osoyoos does not have sufficient childcare spaces to meet demand and to promote workforce participation.
- Staffing challenges is primary issue.
- Children between 0-3 years of age and 6-12 are currently under-served.



Child Care Facilities

Childcare Needs Assessment & Child Care Plan

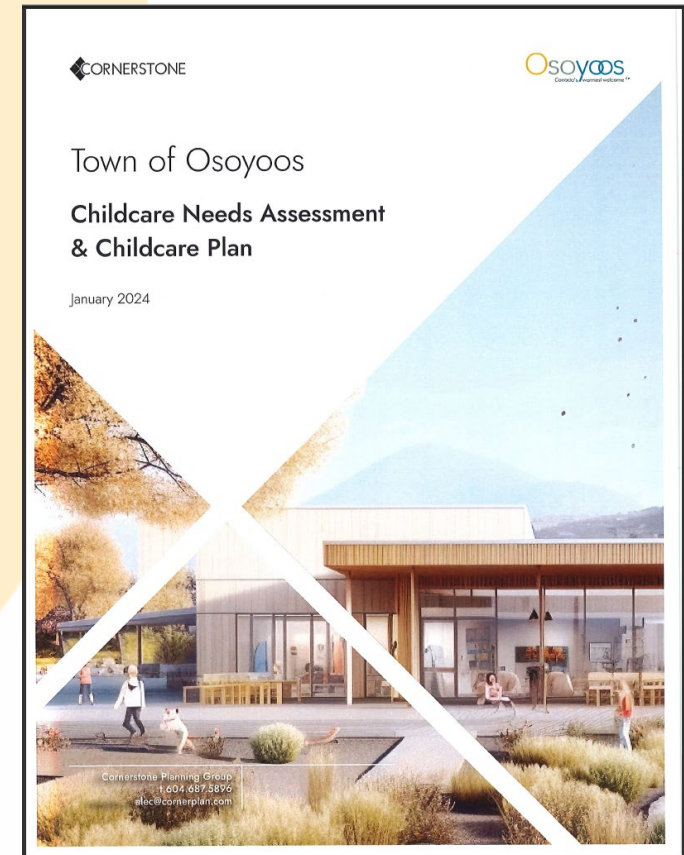
- “Zoning Challenges” (Section 4.4):
 - “child care facility” is only permitted in one zone (Public & Private Institution Zone);
 - “child care facility” is restricted to 5 children as a “home occupation” - inconsistent with legislation;
 - Few incentives for a “child care facility” to locate in a commercial zone.



Child Care Facilities

Childcare Needs Assessment & Child Care Plan

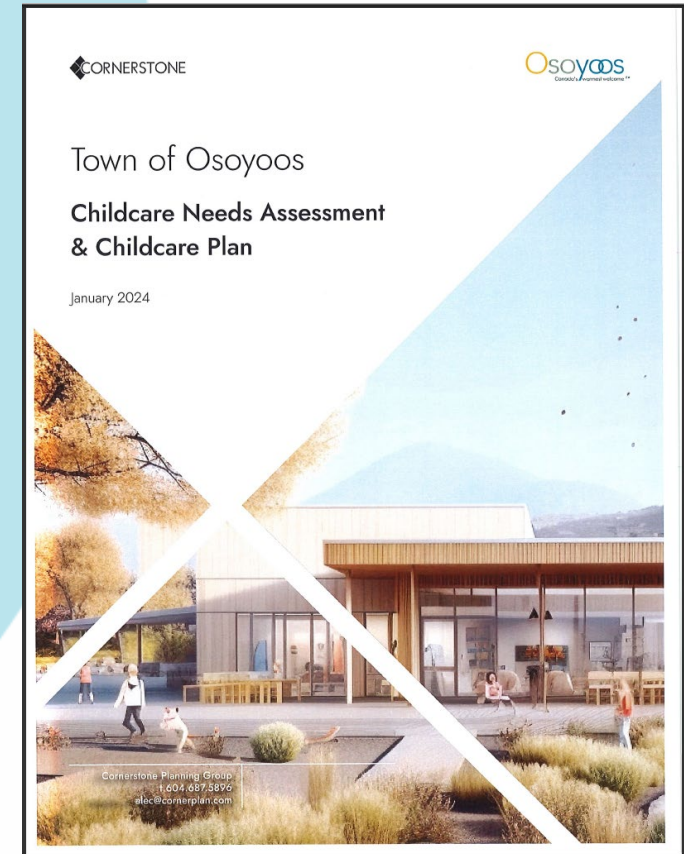
- Zoning Bylaw Review offers opportunities:
 - *Permit multi-age group care childcare facilities in more than just the PI Zone;*
 - *Enhance ... ability of commercial zones to accommodate multi-age group care childcare facilities; and*
 - *... strengthen policies and zoning to entice young families.*



Child Care Facilities

Childcare Needs Assessment & Child Care Plan

- Recommendations (Land Use Planning):
 - Investigate and Amenity Cost Charge (ACC) Bylaw (i.e. collect funds for daycares).
 - Update the Development Cost Charge (DCC) to incentivize affordable housing;
 - Update Zoning Bylaw to permit multi-age care spaces in large facilities (i.e. shopping centres).



Child Care Facilities

Stepping Stones (UBCM)

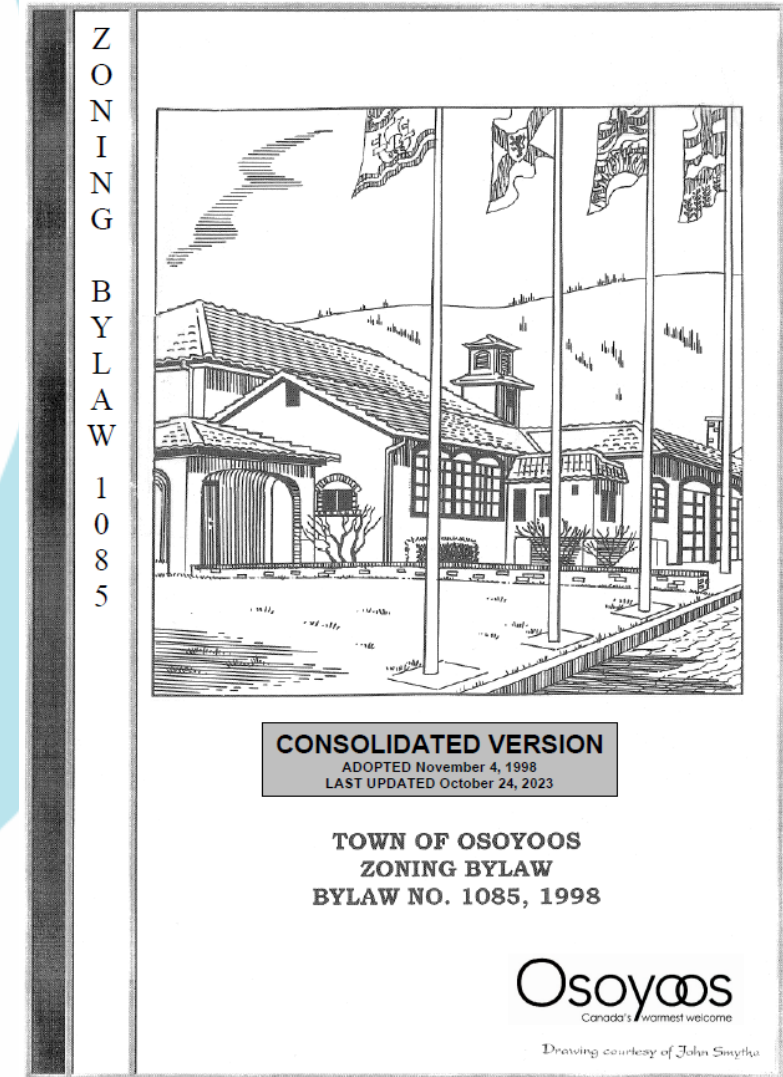
- Ensure zoning definitions are consistent with provincial legislation;
- List “child care” as a Permitted Use wherever it is deemed appropriate; and
- Where not appropriate to allow as a permitted use, provide the least complicated approval path for prospective “child care facility” operators.



Child Care Facilities

Zoning Bylaw Review

- Review definitions
- Review zoning allowances (i.e. permitted use)
- Review zoning regulations (i.e. vehicle parking requirements).



Child Care Facilities

Zoning Bylaw Review

- Proposed to update definition of “child care facility”:

Current	Proposed
means a facility licensed and used as a child care facility pursuant to the <i>Community Care and Assisted Living Act</i> .	means a building or structure in which child care services are provided for more than eight (8) children in accordance <i>Child Care Licensing Regulation</i> under the <i>Community Care and Assisted Living Act</i> .

Child Care Facilities

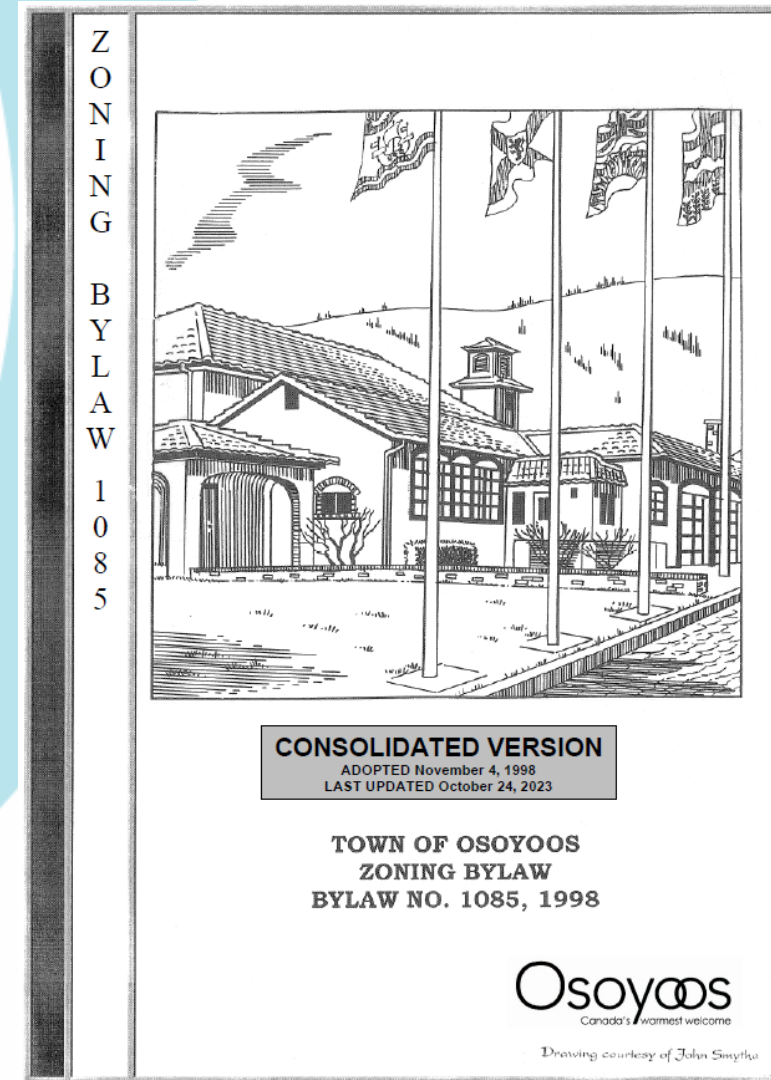
Zoning Bylaw Review

- Proposed to update range of zones in which “child care facility” is a permitted use:

6.12 Uses Permitted in Every Zone

The following uses are permitted in every zone and are not subject to any minimum *parcel* area requirements of any zone:

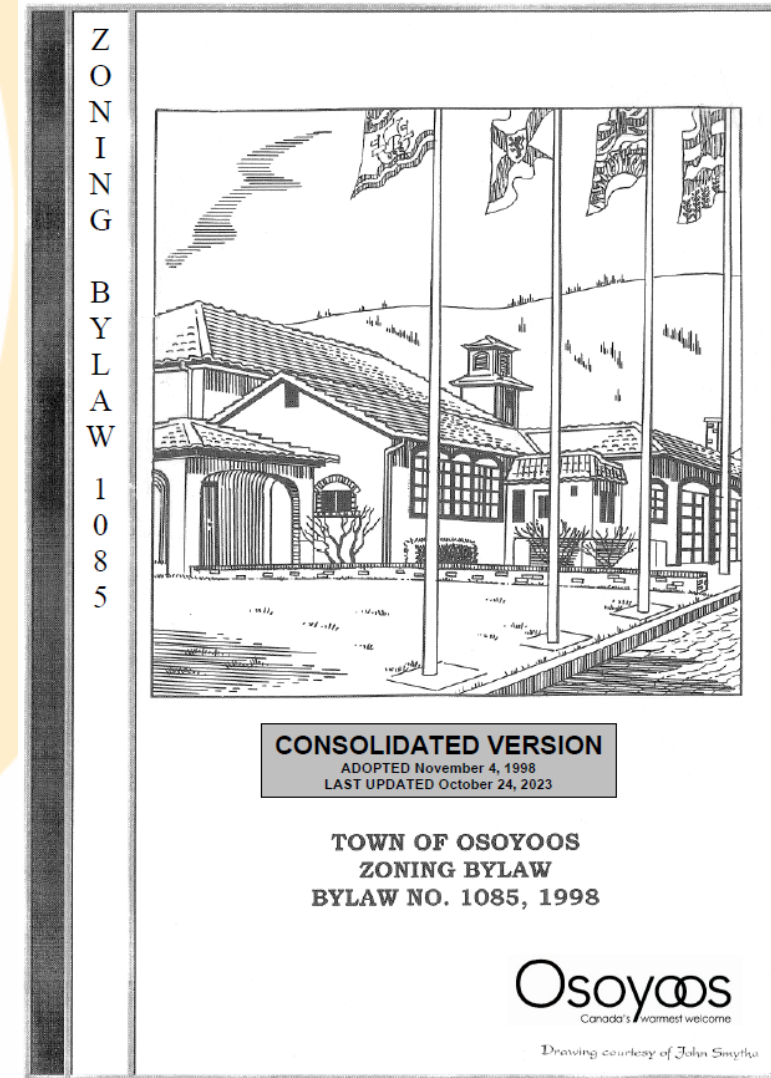
- .1 Government controlled, held or sanctioned *parks*, playfields and playgrounds open to the public;
- .2 *utility uses*;
- .3 *roads and lanes*;
- .4 *conservation area*;
- .5 fire halls, police stations, ambulance service uses, and similar emergency services;
- .6 facilities permitted by provincial enactment for:
 - a) day care for no more than eight (8) persons in care, or
 - b) residence for no more than ten (10) persons, not more than six (6) of whom are persons in care.
- .7 Provincial, municipal, and regional improvement district works for flood control.



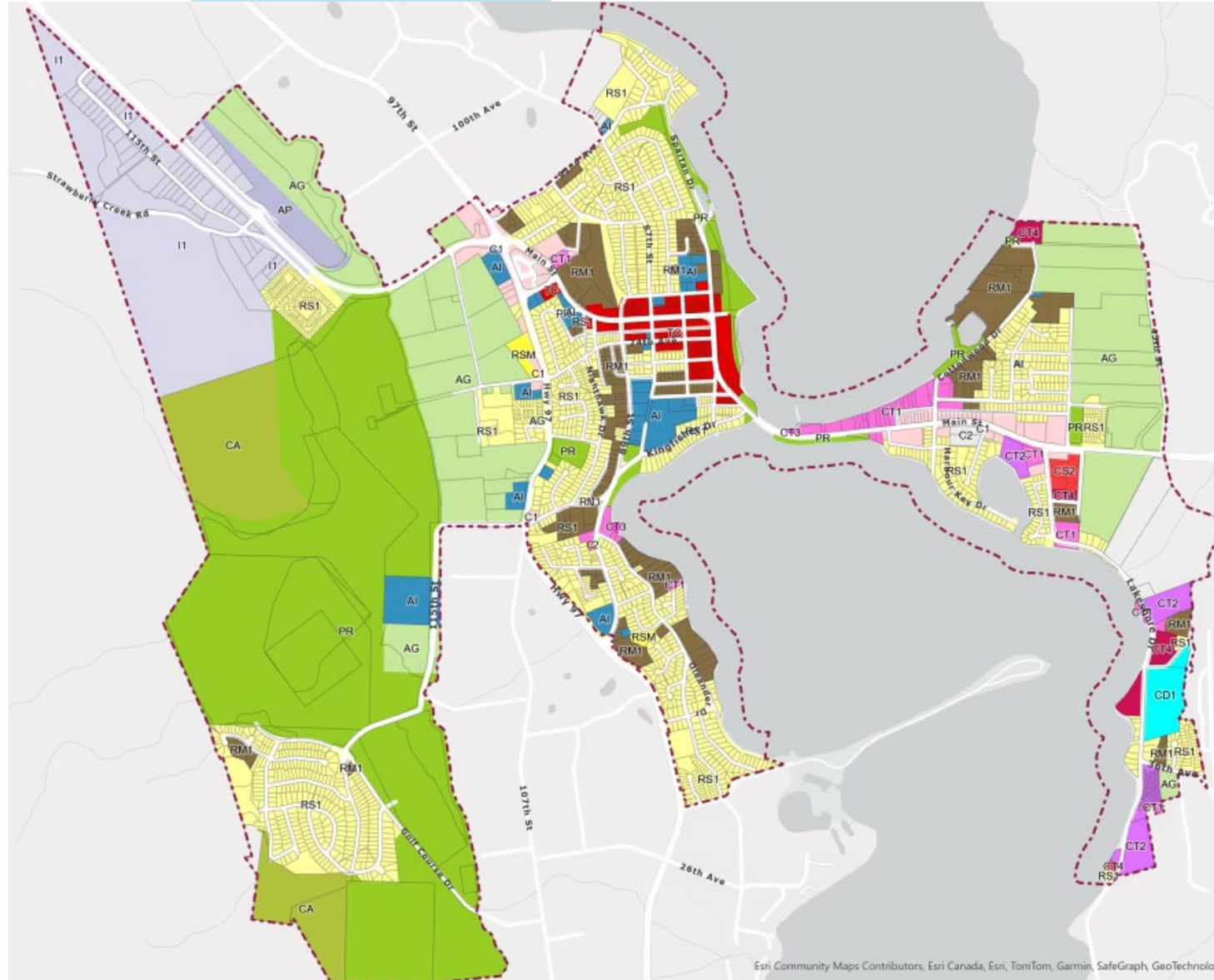
Child Care Facilities

Zoning Bylaw Review

- Proposed to update range of zones in which “child care facility” is a permitted use:
 - all low density residential zones (e.g. RS1);
 - the downtown commercial zone (e.g. C1); and
 - the neighbourhood commercial zone.



Child Care Facilities



- Low Density Residential
- Downtown Commercial
- Neighbourhood Commercial

Child Care Facilities

British Columbia

How 9 people at a public hearing stopped a new child-care centre in Port Coquitlam, B.C.

Residents cited parking, safety issues — but also property values and children running into bears

Port Coquitlam's mayor says he will force a council revote on rejected daycare proposal

Prince Rupert Waives Requirement for Public Hearing in an Effort to Improve Access to Child Care in the City

New Brunswick

Rezoning for Saint John daycare denied after packed public hearing

Residents of dead-end street tell council a daycare centre would threaten pedestrian safety

Yorkton Avenue neighbours not swayed on daycare

A public information session about a proposed daycare did little to sway either side from their fixed positions.

Penticton News

Daycare needs highlighted in Penticton debate

Daycare centre approved

Deborah Pfeiffer - Apr 9, 2015 / 4:06 pm



Child Care Facilities

How this B.C. city made a 'momentous' move to add more childcare spaces

City of Delta (2023)

- “child care facilities” to be permitted in all zones, *except*:
 - in residential and agricultural zones, a child care facility is limited to a “home occupation” use;
 - “home occupation” is limited to no more than 8 children of all ages (as per provincial legislation).

Child Care Facilities

Zoning Bylaw Review

- Other South Okanagan zoning approaches (+8 children):
 - Penticton: Commercial, Institutional, Medium Density Residential & Cluster Residential zones.
 - Summerland: Commercial, Institutional & High Density Residential zones.
 - Oliver: Commercial & Institutional zones.
- Not a permitted use in Low Density Residential zones, considered a “day care centre, major” use.

Child Care Facilities

Options:

1. Allow in the Residential, Commercial and Institutional zones;
2. Allow in the Commercial and Institutional zones;
3. Allow in Institutional zones only (status quo).

Child Care Facilities

Zoning Bylaw Review

- Proposed to update the on-site vehicle parking requirements for “child care facilities”:
 - Current: 1.5 spaces per employee
 - Proposed: 1.0 space per employee
- Other parking requirements could include:
 - by floor area; or
 - by number of children.



Child Care Facilities

Recommendation:

- “child care facilities” be listed as a principal permitted use in the low density residential, commercial and institutional* zones;
- the definition of “child care facilities” be updated; and
- the required on-site vehicle parking be set at 1 space per employee.



QUESTIONS?